

Last Month	Year To Date
-8.90%	-3.86%
12 Months ROR	4 Years
8.61%	113.48%

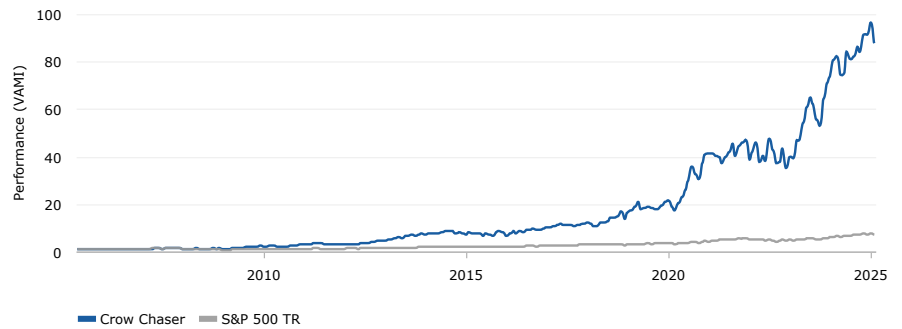
STRATEGY DESCRIPTION

Crow Chaser Composite: Crow Chaser is an Equity Long/Short/Cash program, based on 17 market indicators from four disciplines; Momentum - Seasonal Timing - Sentiment - Trend. The composite is traded approximately 20 times per year, depending on market action. Mutual funds designed to track a 2X performance of the Nasdaq 100 Index are used. Inverse funds are also used. The strategy is volatile and high drawdowns along with high standard deviations are expected. The benchmark is the S&P 500. The Crow Chaser Composite was created July 2005.

GENERAL INFORMATION

Company	Scarecrow Trading
Phone	952-250-7463
E-mail	BenFox@ScarecrowTrading.com
Website	www.ScarecrowTrading.com
Management Fee	0.00%

MONTHLY PERFORMANCE OF \$1



	3 Month ROR	12 Months ROR	36 Month ROR	60 Months ROR
Crow Chaser	-3.90%	8.61%	109.95%	366.99%
S&P 500 TR	-0.97%	18.43%	42.60%	117.94%

RETURN STATISTICS

Total Return Annualized	25.55%
Winning Months (%)	62.71%
120 Months ROR Annualized	26.70%
60 Months ROR Annualized	36.10%
24 Months ROR Annualized	49.13%
36 Months ROR Annualized	28.05%
Alpha Monthly	1.08%
Down Capture Ratio vs S&P 500 TR (NC)	120.19
Up Capture Ratio vs S&P 500 TR (NC)	175.50

RETURN STATISTICS

Sharpe Ratio	0.86
Max Drawdown (Monthly)	-41.56%
Correlation vs. S&P 500 TR	0.62
Downside Deviation	5.35%
Beta	1.35
VaR Historical	-13.72
Average Winning Month	7.85%
Average Losing Month	-6.98%

MONTHLY PERFORMANCE

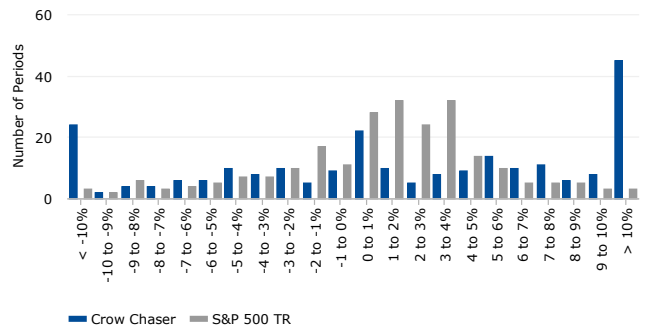
	Jan	Feb	Mar	Apr	May	Jun	Jul	Aug	Sep	Oct	Nov	Dec	Year	S&P 500 TR
2025	5.53	-8.90											-3.86	1.44
2024	3.14	10.20	1.87	-9.45	0.80	11.92	-3.83	1.66	4.54	-2.23	8.68	-0.04	28.40	25.05
2023	13.29	-1.23	18.43	0.52	14.82	12.45	7.09	-3.92	-10.61	-4.67	20.90	10.57	101.59	26.27
2022	-17.20	7.54	9.66	-17.55	7.20	-5.89	24.91	-10.54	-12.09	1.13	14.28	-18.53	-24.88	-18.10
2021	0.51	-0.25	-2.41	-0.65	-7.22	7.72	5.47	8.32	-11.30	9.85	3.60	2.19	14.49	28.71
2020	4.66	-13.19	-7.86	17.49	12.47	12.59	14.70	21.23	-8.79	-6.47	22.01	9.97	98.23	18.40
2019	17.90	5.54	7.68	10.61	-12.75	1.09	4.35	-4.13	-2.82	0.44	7.89	7.62	48.21	31.49
2018	5.50	-2.70	-8.15	0.53	11.01	1.85	3.02	11.70	-0.83	6.25	13.52	-18.05	20.86	-4.38
2017	8.05	-0.08	3.34	3.43	5.62	-5.07	0.76	0.04	-3.88	6.33	1.20	0.75	21.54	21.83
2016	-19.09	12.41	13.60	-6.51	9.48	-4.99	10.29	1.87	4.06	-3.21	0.44	1.93	16.41	11.96
2015	-4.49	14.71	-5.77	-4.43	0.58	-8.02	8.63	-2.60	-7.27	24.68	0.77	-3.49	8.61	1.38
2014	-4.11	10.25	-5.57	3.66	0.29	4.49	5.35	0.78	-1.81	-11.73	6.49	-4.97	0.99	13.69
2013	5.84	2.15	1.48	15.82	5.45	-4.96	12.75	-0.73	9.46	-5.15	4.85	5.89	64.28	32.39
2012	-0.23	0.96	2.27	0.95	-2.25	10.71	1.77	5.80	6.70	7.67	9.59	-1.43	50.39	16.00
2011	4.53	7.16	0.14	6.97	4.50	-6.55	-5.13	-2.24	-3.26	8.04	-6.01	-2.40	4.20	2.11
2010	-12.90	0.91	15.73	5.09	-14.92	-9.12	14.43	-10.29	27.22	6.81	-3.28	9.57	22.20	15.06
2009	-6.87	-11.21	10.68	26.42	6.11	-2.42	14.24	5.41	18.28	-10.57	8.13	10.50	82.34	26.46
2008	-23.18	-10.67	7.13	14.95	11.68	-22.28	-2.34	0.13	0.12	43.49	-14.17	2.74	-9.13	-37.00
2007	2.87	3.73	-4.67	15.29	5.96	0.00	-1.15	4.72	12.58	12.44	-13.87	-1.13	38.68	5.49
2006	5.60	-7.34	9.84	-0.95	-14.31	6.30	-13.72	-6.20	7.17	6.00	0.33	0.88	-9.75	15.80
2005							0.20	3.28	-4.11	12.71	6.03	-3.76	14.13	5.77

CROW CHASER GROSS

ROLLING RETURN REPORT %

Period	Best	Worst	Average	Median	Last
3 Months	56.56%	-34.58%	6.97%	5.36%	-3.90%
6 Months	90.62%	-29.60%	14.01%	12.86%	6.75%
1 Year	131.69%	-31.23%	29.84%	25.61%	8.61%
3 Years	268.48%	-3.90%	111.22%	109.03%	109.95%
5 Years	633.39%	87.57%	257.05%	236.64%	366.99%
10 Years	1684.73%	448.23%	945.17%	912.32%	965.96%

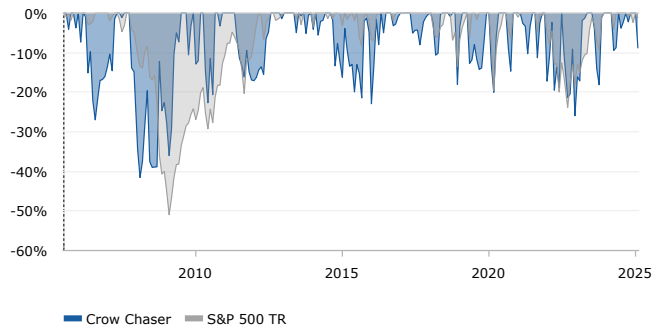
DISTRIBUTION OF MONTHLY RETURNS



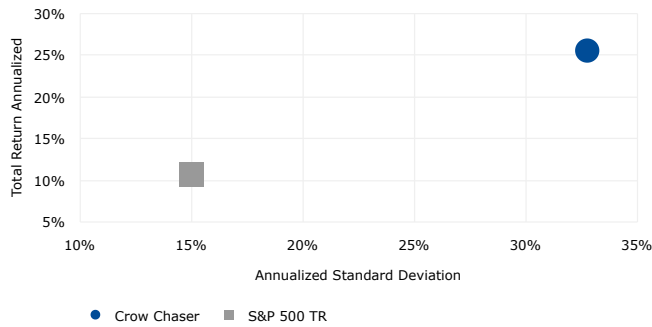
DRAWDOWN REPORT

No.	Depth (%)	Length (Months)	Recovery (Months)	Start date	End date
1	-41.56%	4	17	11/2007	07/2009
2	-26.98%	5	9	04/2006	05/2007
3	-25.95%	5	5	08/2022	05/2023
4	-22.92%	17	4	09/2014	05/2016
5	-22.68%	2	3	05/2010	09/2010

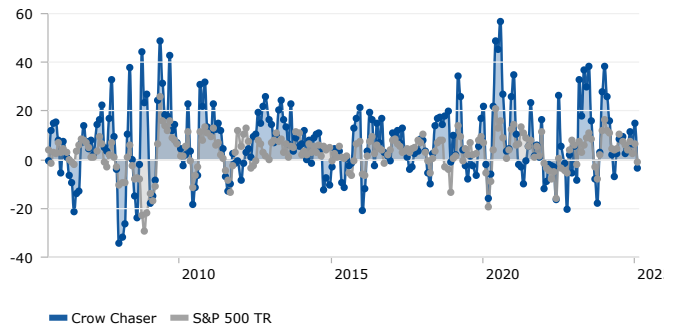
DRAWDOWN



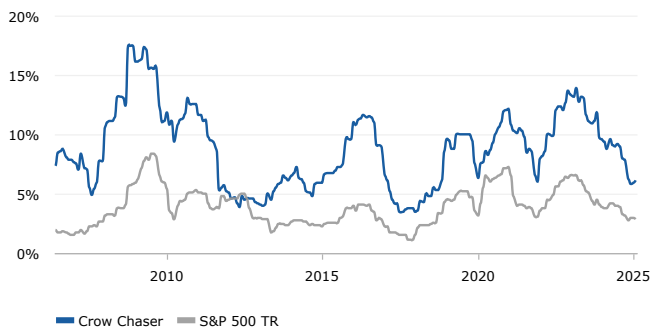
RISK/RETURN COMPARISON



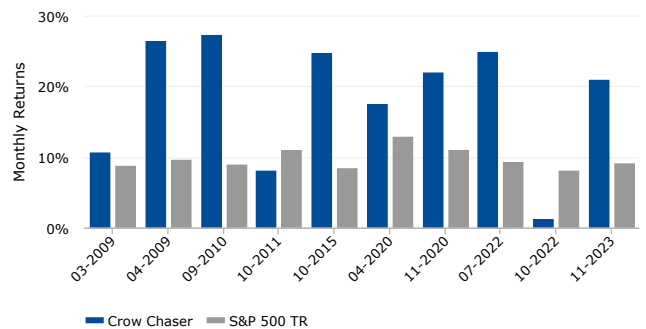
3 MONTHS ROLLING ROR



VOLATILITY (12 MONTHS ROLLING)



UP CAPTURE VS. S&P 500 TR



Last Month	Year To Date
-8.90%	-4.44%
12 Months ROR	4 Years
5.83%	93.07%

STRATEGY DESCRIPTION

Crow Chaser Composite: Crow Chaser is an Equity Long/Short/Cash program, based on 17 market indicators from four disciplines; Momentum - Seasonal Timing - Sentiment - Trend. The composite is traded approximately 20 times per year, depending on market action. Mutual funds designed to track a 2X performance of the Nasdaq 100 Index are used. Inverse funds are also used. The strategy is volatile and high drawdowns along with high standard deviations are expected. The benchmark is the S&P 500. The Crow Chaser Composite was created July 2005.

GENERAL INFORMATION

Company	Scarecrow Trading
Phone	952-250-7463
E-mail	BenFox@ScarecrowTrading.com
Website	www.ScarecrowTrading.com
Management Fee	2.50%

MONTHLY PERFORMANCE OF \$1



	3 Month ROR	12 Months ROR	36 Month ROR	60 Months ROR
Crow Chaser	-4.47%	5.83%	94.76%	312.42%
S&P 500 TR	-0.97%	18.43%	42.60%	117.94%

RETURN STATISTICS

Total Return Annualized	22.50%
Winning Months (%)	60.59%
120 Months ROR Annualized	23.62%
60 Months ROR Annualized	32.76%
24 Months ROR Annualized	45.39%
36 Months ROR Annualized	24.88%
Alpha Monthly	0.87%
Down Capture Ratio vs S&P 500 TR (NC)	125.25
Up Capture Ratio vs S&P 500 TR (NC)	168.87

RETURN STATISTICS

Sharpe Ratio	0.79
Max Drawdown (Monthly)	-42.03%
Correlation vs. S&P 500 TR	0.62
Downside Deviation	5.45%
Beta	1.34
VaR Historical	-13.87
Average Winning Month	7.90%
Average Losing Month	-6.79%

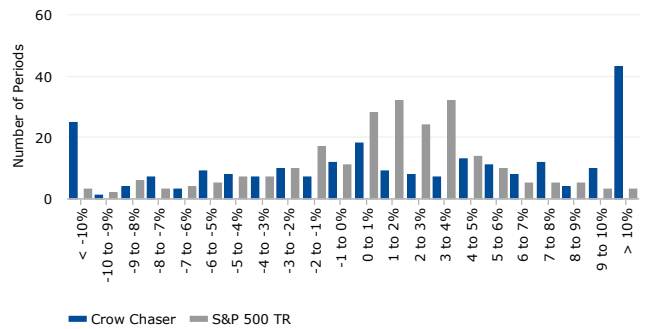
MONTHLY PERFORMANCE

	Jan	Feb	Mar	Apr	May	Jun	Jul	Aug	Sep	Oct	Nov	Dec	Year	S&P 500 TR
2025	4.90	-8.90											-4.44	1.44
2024	2.51	10.20	1.87	-10.08	0.80	11.92	-4.46	1.66	4.54	-2.85	8.68	-0.04	25.10	25.05
2023	12.66	-1.23	18.43	-0.11	14.82	12.45	6.46	-3.92	-10.61	-5.29	20.90	10.57	96.75	26.27
2022	-17.83	7.54	9.66	-18.17	7.20	-5.89	24.28	-10.54	-12.09	0.51	14.28	-18.53	-26.83	-18.10
2021	-0.12	-0.25	-2.41	-1.27	-7.22	7.72	4.85	8.32	-11.30	9.23	3.60	2.19	11.77	28.71
2020	4.04	-13.19	-7.86	16.86	12.47	12.59	14.08	21.23	-8.79	-7.09	22.01	9.97	93.65	18.40
2019	17.28	5.54	7.68	9.98	-12.75	1.09	3.73	-4.13	-2.82	-0.19	7.89	7.62	44.80	31.49
2018	4.88	-2.70	-8.15	-0.10	11.01	1.85	2.39	11.70	-0.83	5.63	13.52	-18.05	18.00	-4.38
2017	7.43	-0.08	3.34	2.80	5.62	-5.07	0.13	0.04	-3.88	5.70	1.20	0.75	18.64	21.83
2016	-19.71	12.41	13.60	-7.14	9.48	-4.99	9.67	1.87	4.06	-3.84	0.44	1.93	13.34	11.96
2015	-5.12	14.71	-5.77	-5.05	0.58	-8.02	8.01	-2.60	-7.27	24.05	0.77	-3.49	6.03	1.38
2014	-4.73	10.25	-5.57	3.03	0.29	4.49	4.72	0.78	-1.81	-12.36	6.49	-4.97	-1.58	13.69
2013	5.21	2.15	1.48	15.19	5.45	-4.96	12.12	-0.73	9.46	-5.78	4.85	5.89	60.46	32.39
2012	-0.86	0.96	2.27	0.33	-2.25	10.71	1.14	5.80	6.70	7.05	9.59	-1.42	46.76	16.00
2011	3.91	7.16	0.14	6.35	4.50	-6.55	-5.76	-2.24	-3.26	7.41	-6.01	-2.40	1.70	2.11
2010	-13.52	0.91	15.73	4.46	-14.92	-9.12	13.81	-10.29	27.22	6.18	-3.28	9.57	19.23	15.06
2009	-7.49	-11.21	10.68	25.80	6.11	-2.42	13.62	5.41	18.28	-11.19	8.13	10.50	78.01	26.46
2008	-23.80	-10.67	7.13	14.33	11.68	-22.28	-2.96	0.13	0.12	42.86	-14.17	2.74	-11.31	-37.00
2007	2.25	3.73	-4.67	14.67	5.96	0.00	-1.77	4.72	12.58	11.82	-13.87	-1.13	35.48	5.49
2006	4.97	-7.34	9.84	-1.58	-14.31	6.30	-14.34	-6.20	7.17	5.38	0.33	0.88	-12.03	15.80
2005							-0.42	3.28	-4.11	12.08	6.03	-3.76	12.79	5.77

ROLLING RETURN REPORT %

Period	Best	Worst	Average	Median	Last
3 Months	55.71%	-35.11%	6.32%	4.72%	-4.47%
6 Months	88.57%	-30.56%	12.63%	11.47%	5.44%
1 Year	126.25%	-32.96%	26.71%	22.62%	5.83%
3 Years	243.22%	-10.75%	96.35%	94.61%	94.76%
5 Years	549.93%	65.58%	216.11%	198.38%	312.42%
10 Years	1299.92%	328.75%	718.14%	692.40%	733.75%

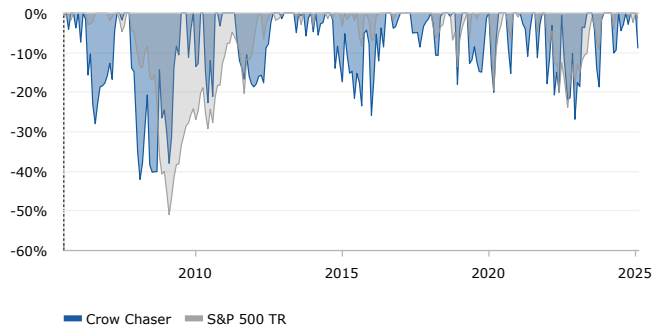
DISTRIBUTION OF MONTHLY RETURNS



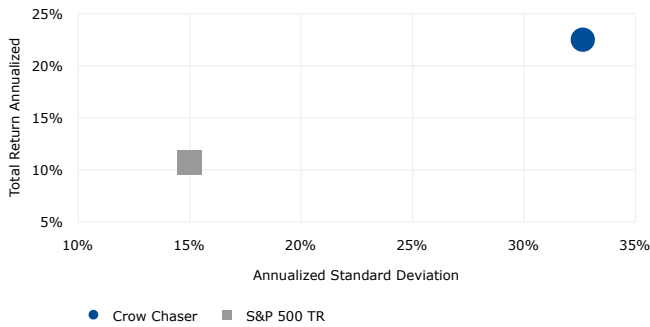
DRAWDOWN REPORT

No.	Depth (%)	Length (Months)	Recovery (Months)	Start date	End date
1	-42.03%	4	17	11/2007	07/2009
2	-27.97%	5	9	04/2006	05/2007
3	-26.83%	12	5	01/2022	05/2023
4	-25.87%	17	6	09/2014	07/2016
5	-22.68%	2	3	05/2010	09/2010

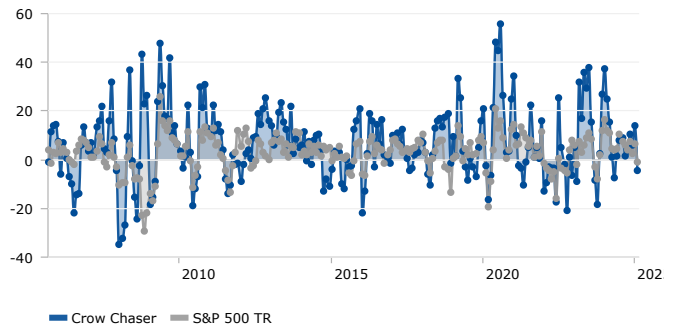
DRAWDOWN



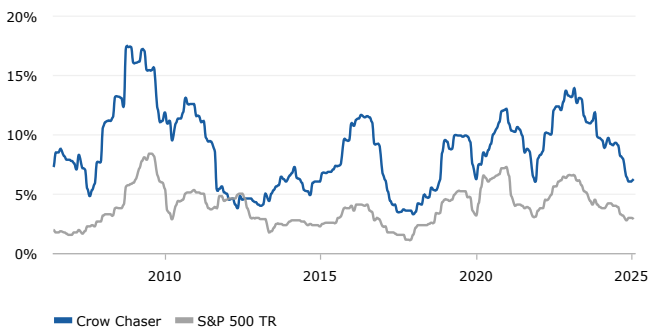
RISK/RETURN COMPARISON



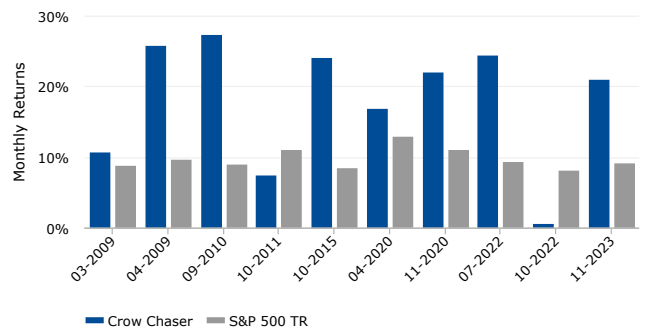
3 MONTHS ROLLING ROR



VOLATILITY (12 MONTHS ROLLING)



UP CAPTURE VS. S&P 500 TR



CROW CHASER GROSS

This fact sheet is for illustrative purposes only and is not intended to project the performance of any specific investment strategy. This is a traded illustration and does not take into account your particular investment objectives, financial situation or needs and is not suitable for all investors. All investments and/or investment strategies involve risk including the possible loss of principal. There is no assurance that any investment strategy will achieve its objectives.

Scarecrow Trading Incorporated ("STI") is a Registered Investment Advisor in the State of Minnesota in accordance with Minnesota Statute 80A. A listing of composite descriptions is available upon request.

STI claims compliance with the Global Investment Performance Standards (GIPS®) and has prepared and presented this report in compliance with the GIPS standards. STI has been independently verified for the periods July 1, 2005, through December 31, 2022. A firm that claims compliance with the GIPS standards must establish policies and procedures for complying with all the applicable requirements of the GIPS standards. Verification provides assurance on whether the firm's policies and procedures related to composite and pooled fund maintenance, as well as the calculation, presentation, and distribution of performance, have been designed in compliance with the GIPS standards and have been implemented on a firm-wide basis. Verification does not provide assurance on the accuracy of any specific performance report.

The Crow Chaser Composite has had a performance examination for the periods July 1, 2005, through December 31, 2022. The verification and performance examination reports are available upon request.

Results are based on fully discretionary accounts under management, including those accounts no longer with the firm. Composite and benchmark performance included dividends, interest income, and capital gains. Past performance is not indicative of future results. The composite is comprised of all non fee paying accounts. Composite dispersion is not presented since the composite contained five or fewer accounts for all years.

The U.S. Dollar is the currency used to express performance. Returns are presented gross and net of management fees and include the reinvestment of all income. The annual composite dispersion presented is an asset-weighted standard deviation calculated for the accounts in the composite the entire year. Policies for valuing portfolios, calculating performance, and preparing compliant presentations are available upon request.

The preceding illustration for the Scarecrow Trading programs represents a combination of Scarecrow Trading strategies based on a rules-based decision tree. Indicators designed and maintained by Scarecrow Trading determine the allocation to the various Scarecrow Trading strategies.

No representation is being made that any account will or is likely to achieve profits or have losses similar to those shown. In fact, there may be frequent sharp differences between the historical performance record and actual client results.

Performance results illustrated are GROSS. Performance results are gross of custodian costs and do not consider the impact of taxes.

Historical trading does involve risk and may reflect the impact that any material market or economic factor may have on Scarecrow Trading's decision making. Since all trades are actually executed, the performance record will represent the impact, if any, of certain market factors (e.g. lack of liquidity, trading costs, etc.). The conditions, objectives or investment strategies may have changed materially during the time period, or after the time period, portrayed in this performance record, and the effect of such change is portrayed in the performance record.

There is no guarantee that future portfolio management or strategy selection decisions will mirror this performance record. The investment strategies followed may only partially relate to the type of services currently offered by Scarecrow Trading. The assets utilized in this performance record may be different from the assets utilized by Scarecrow Trading when trading actual client accounts (e.g. the performance record may include some assets that Scarecrow Trading no longer has access to or recommends to its clients).

The performance of different assets varies widely. As a result, actual client account results may vary widely from those shown in this performance record. There are numerous other factors related to the markets in general or to the implementation of any specific strategy which cannot be fully accounted for in the preparation of this historical performance record, all of which can adversely affect results when actually managing client assets.

Information pertaining to Scarecrow Trading's advisory operations, services, and fees is set forth in Scarecrow Trading's current disclosure statement, a copy of which is available from Scarecrow Trading upon request. Performance results have been compiled solely by Scarecrow Trading and have been independently verified by Theta Research. Scarecrow Trading will provide passes to Theta Research upon request. Theta Research maintains all information supporting the performance results.

Past performance may not be indicative of future results.